

PRACTICE-ORIENTED

LOW-LEVEL LASER THERAPY
IN HUMAN MEDICINE



ONE FOR ALL – ALL IN ONE!

LASERDUSCHE **21+**
POWERTWIN

- MORE POWER
- NEW DESIGN
- PRECISION SOFTWARE
- EXPANDED FREQUENCY SERIES
- FI BANDS (AUTORUN) AND SWEEPS
- MOBILE APPLICATION
- GUARANTEED QUALITY

YOUR ADVANTAGE

A THERAPY DEVICE
FOR MANY DIFFERENT USES

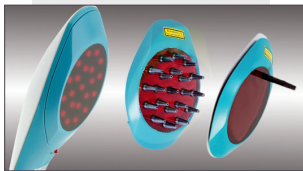
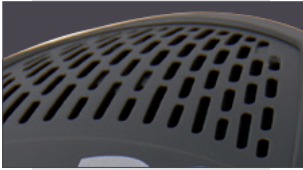
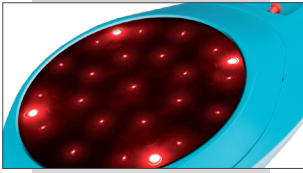
Outstanding
value for money

New customers – loyal customers
GREATER REVENUES
Fast amortization

- **A therapy device** for all kinds of indications
- **Anything is possible:** classic laser therapy – laserpuncture – laser frequency therapy
- **Various changeable** fixtures and precision software for different laser therapy applications
- **Now also with FI bands and sweeps (autorun)** for maximum ease of use
- **Mobile application** – light, compact therapy unit – for indoor and outdoor use

MKW

LASERSYSTEM
www.mkw-laser.de



MORE POWER⁺

The new laser shower PowerTwin21⁺ doubles the laser output to 2,100 mW (21 x 100 mW). This laser model thus achieves one of the highest power densities of all low-level laser units on a treatment area that is still 55 cm² large. The laser light can penetrate deeper into the tissue to be treated, which reduces therapy time!

NEW DESIGN⁺

Complete relaunch of the housing design allows for ergonomic, simple handling. The cooling of the high-performance laser diodes with fans and cooling fins ensures efficient treatment.

PRECISION SOFTWARE⁺

Laser parameters can be set individually. Frequency series are pre-programmed. Frequency bands (AUTORUN!) and sweeps. Individual settings possible for special applications. In addition to the CW (continuous-wave) mode of operation and the tried-and-tested multi-frequency spectrum, other frequency programmes (e.g. Nogier, Bahr, Solfeggio, and Reinger frequencies) are already preset. Additional frequencies may be freely chosen and programmed using 20 memory locations. Treatment dose, mode of operation as well as therapy time are shown on the colour display.

CHANGEABLE FIXTURE⁺

For fast and hygienic handling. The highlight: a device for different applications which can be retrofitted into a laser comb with a simple twist. You use the comb adapter to treat very hairy skin – and a point adapter is available for laserpuncture.

GUARANTEED MKW QUALITY⁺

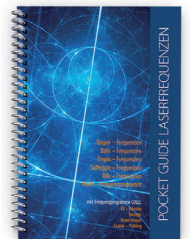
MKW LASERSYSTEM – more than 30 years of experience – innovation and know-how!

MKW offers

- safety thanks to certified manufacture, CB report, and FDA approval
- qualified scientific advisers in many specialist fields
- webinars and seminars with top speakers
- personal instruction and assistance by licensed MKW staff members

⁺Booklet (pocket guide)

A treatment book with sample indications is supplied.



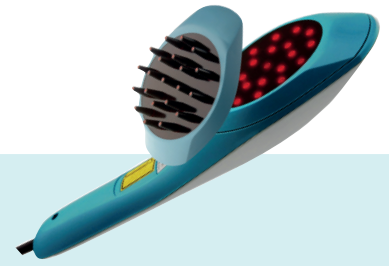
INTERESTED?

Ask for information material at www.mkw-laser.de

MKW
LASERSYSTEM

POWERTWIN 21 - PRODUCT SHEET

* *Effective* * *Safe* * *Fast* * *Convenient*



1. EFFECTS

- Low-level laser device
- Biostimulating (photochemical) effect
- Tissue regeneration
- Inhibition of inflammation
- Improved circulation
- Pain relief
- Proven effective in numerous studies

2. APPLICATION FEATURES

- Apply directly to skin
- No painting or spiral movements necessary
- Fatigue-free application
- Gentle warming of treated area without the possibility of burning

3. DESIGN FEATURES

- Covered by special filter glass (shower adapter)
- Can be transformed into laser comb (comb adapter)
- With direct power supply
- No additional base unit necessary
- All settings directly on PowerTwin
- Large integrated color display
- Battery operation possible
- Mobile and light device

4. TECHNOLOGICAL FEATURES

- Works with 21 laser diodes
- Up to 100 mW per laser diode
- Treatment area 8.5 square inches (55 cm²)
- Highest laser density
- Nearly homogenous laser energy applied to the treatment area
- Additional resonance frequencies

5. MKW

- Over 30 years of experience
- Pioneer in low-level laser therapy
- Competent and innovative
- Specialist in low level laser therapy
- Invented laser shower in 1988
- Developed World's first laser comb in 1991
- Manufacturing facilities in Germany
- US office